

BEEF CATTLE

Friday 11th & Saturday 12th SEPTEMBER 2026

CHIEF STEWARDS:

Emily Taylor 0447 555 120

Kim Taylor 0409 718 140

2 FULL DAY - PROGRAM:

**PARADERS/JUNIOR JUDGING COMPETITION
STUD JUNIOR HEIFER SHOW
COMMERCIAL (RETAINMENT) HEIFER CLASS
OPEN STEER/HEIFER CLASS
STUD CATTLE JUDGING**

CATTLE ENTRIES TO:

Cattle Secretary

Kim Taylor

“Jaskim Park” 120 Bridge Road

Quipolly NSW 2343

Mobile: 0409 718 140

Email: ekj@bigpond.net.au

Please use the Cattle Entry Forms provided on the Quirindi Show Society Inc. website

www.quirindishowsociety.com

Quirindi Showground PIC Number NC508037

***Stud Cattle entry fee is \$10 per exhibit, (including interbreed classes)
Heifer Show & Open Steer/Heifer excluded, additional \$10 per entry***

Entry Closing Date:

Wednesday 2nd September 2026

LATE ENTRIES will not be accepted

Schedule

Friday 11th

7:30am Weighing of steers (steers assigned class based off weight)

9:00am Paraders

11:30am Junior Judging (assessments and orals)

2:00pm Commercial (Retainment) Heifer Class

2.15pm Open Steer/Trade Heifer Class

4.15pm All Breeds Stud Junior Heifer Show

Saturday 12th

9.00am Stud Cattle Judging followed by interbreed classes

Conditions Of Entry

- **Completed National Vendor Declaration Form/Travelling Stock Statement/Waybill** to be provided on the day of show
- Full particulars regarding breed, age, pedigree, **NLIS number** and name of exhibit must be provided on the Beef Cattle entry form
- All cattle entered in stud cattle classes **MUST** be registered with their recognised breed society
- All beef cattle **MUST** be haltered at all times, including the use of nose dogs unless in the case of Bulls as per below
- All bulls 12 months and over must have a nose ring
- Heifer not to have a calf, unless otherwise stated
- Calves under 8 months may accompany their mother whilst being judged
- Age of cattle, as of 1st September 2026
- All ribbons will be awarded at the discretion of the judge
- All cattle to have NLIS devices fitted
- National Cattle Health Declaration, Pesti Virus Certificate and Waiver Forms to accompany all entries. Entries **WILL** not be accepted without these forms
- Bedding will be provided by the society, The use of straw is strictly prohibited
- Stalls will be allocated by the society to each exhibitor
- The Quirindi show Society Inc. recommends that all Exhibitors have Public Liability Insurance
- Any animal deemed unsafe is to be removed from the grounds
- Classes may be combined or split at the discretion of the committee

Bank Details: Quirindi Show Society

BSB: 932 000

Account: 689867

JUNIOR JUDGING PARADERS COMPETITION

FREE ENTRY

Participants may enter at the cattle steward desk

All participants **MUST** have completed a waiver form

- **Pee Wee – 12 Years & Under**
- **Junior – 12 & Under 16 years**
- **Senior – 16 & under 25 years**

COMMERCIAL (RETAINMENT) HEIFER CLASS

Friday 11th SEPTEMBER 2026

Entry Fee: \$10 per exhibit

Classes:

Class 1: Commercial Heifer Under 20 months

CHAMPION and RESERVE CHAMPION COMMERCIAL HEIFER Ribbon plus Trophy

RULES

In addition to the Beef cattle section conditions of entry the following will apply

- Open to commercial heifers.
- Heifers must be between 8 months and 20 months as of the 1st September 2026.
- Heifers must not have had a calf.
- Heifers entered in these classes are NOT eligible for the OPEN STEER/TRADE HEIFER CLASS component OR STUD CLASSES of the competition

OPEN STEER/TRADE HEIFER COMPETITION

Friday 11th SEPTEMBER 2026

Entry Fee: \$10 per exhibit

Classes:

Class 2: Lightweight Steer (300kg-399kg)

Class 3: Middleweight Steer (400kg-499kg)

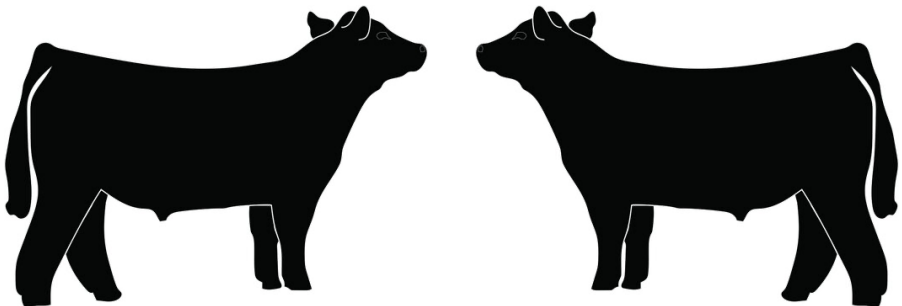
Class 4: Heavyweight Steer (500kg and above)

GRAND CHAMPION STEER/TRADE HEIFER Ribbon plus Trophy

RULES

In addition to the Beef cattle section conditions of entry the following will apply

- Entries must show no permanent teeth (Milk Teeth only)
- All entries to be broken to lead and carry a nose ring or nose clip
- Competition is open to purebred or crossbred animals
- Heifers entered in these classes are NOT eligible for the COMMERCIAL HEIFER component of the competition
- **TO BE JUDGED AS KILL TOMMORROW**
- **CLASSES WILL BE ALLOACTED BASED ON WEIGHT ON FRIDAY MORNING**



ALL BREEDS STUD JUNIOR HEIFER SHOW

Friday 11th SEPTEMBER 2026

Entry Fee: \$10 per exhibit

Please use the Cattle Entry Forms provided on the Quirindi Show Society Inc. website
www.quirindishowsociety.com

Judging to commence **4.00pm**

Classes:

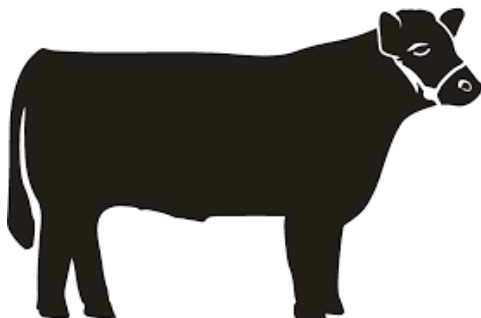
Class 5: Stud Heifer under 12 months

Class 6: Stud Heifer 12 months and under 16 months

Class 7: Stud Heifer 16 months and under 20 months

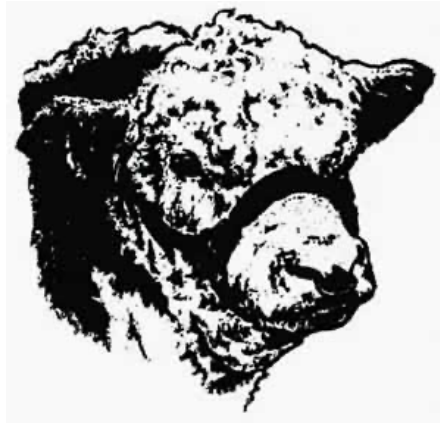
CHAMPION and RESERVE CHAMPION HEIFER Ribbon plus Trophy

Note: All heifers in the Stud Heifer Show must be exhibited in the Saturday Stud Classes and must be registered with a breed society. A heifer that is exhibited in the Steer/Trade Heifer class is not eligible for the Stud Heifer Show



STUD CATTLE

SATURDAY 12th SEPTEMBER 2026



Entry Fee \$10.00

STUD CATTLE CLASSES

Class 8: Bull 6 months and under 12 months

Class 9: Bull 12 months and under 16 months

Class 10: Bull 16 months and under 20 months

Junior Champion Bull

Reserve Champion Bull

Class 11: Bull 20 Months and under 24 months

Class 12: Bull 24 months and under 30 months

Class 13: Bull 30 months and over

Senior Champion Bull

Reserve Senior Champion Bull

Grand Champion Bull

Class 14: Heifer 6 months and under 12 months
Class 15: Heifer 12 months and under 16 months
Class 16: Heifer 16 months and under 20 months

Junior Champion Female
Reserve Junior Champion Female

Class 17: Female 20 months and under 24 months
Class 18: Female 24 months and under 30 months
Class 19: Female 30 months and over

Senior Champion Female
Reserve Senior Champion Female
Grand Champion Female

STUD CLASSES: Stewards may change classes after entries close according to numbers and ages of cattle nominated. Ribbons will be presented for bulls and females of each breed as follows – Grand Champion, Senior and Reserve Senior Champion, Junior and Reserve Junior Champion.

STUD INTERBREED CLASSES

Class 20: **Interbreed pair of Heifers:** Two Heifers, both bred and owned by the ONE exhibitor

Class 21: **Interbreed pair of Bulls:** Two Bulls, both bred and owned by the ONE exhibitor

Class 22: **Interbreed Breeder's Group:** Three head, both sexes to be represented; bred and owned by ONE Exhibitor.

Class 23: **Interbreed Sire's Progeny:** Three head, both sexes to be represented; bred and owned by ONE Exhibitor

Class 24: **Interbreed Dam's Progeny:** Two head, both sexes to be represented; bred and owned by ONE Exhibitor

Supreme Female of the show: To be judged from Breed champions

Supreme Bull of the show: To be judged from Breed champions

Supreme Beef Exhibit of the show: To be judged from Breed champions

We would like to thank all sponsors for their support towards the Beef Cattle Section