

# Section F

## *Photography*

Steward: Hannah McCauley, 0414 970 692

### Exhibit Information

Entry fee	\$1 per photo
Requirements on delivery	Completed entry form, entry fees and exhibit. Exhibitors Name and Class Number clearly written on the back every item given.
Exhibit delivery location and time	At new Pavilion Wednesday 6th September between 1pm & 6pm. Early deliveries can go to the Secretary's office during office hours in the week of the Show.
Exhibit & Prize Collection Location & Time:	Sunday 10th September between 1pm & 3pm. Please do not remove photos from the wall, the Steward will do this.

### Conditions of entry

General	<ul style="list-style-type: none"> <li>All photos lodged by the Exhibitor must have been taken by the Exhibitor.</li> <li>Digital "processing" is permitted; however, addition of extra elements that were <i>not</i> part of the original scene /composition is not permitted.</li> <li>Exhibitors can enter in Primary, High School, Adult depending on the exhibitors' age. Any age can enter in the open class but cannot enter the same image used in the other classes.</li> <li>A <b>maximum of 15 images</b> per exhibitor per class.</li> <li><b>NO AI generated or modified images</b> are permitted for entry in the competition.</li> </ul> <p><b>NOTE:</b> NO pins or staples will be used. Your photos will still need to be mounted on PLAIN CARDBOARD or MATT BOARDS. Frames will be allowed but you must supply your own stand.</p>
Mounting and sizing	<ul style="list-style-type: none"> <li>Photos <b>MUST</b> be mounted on FINE PLAIN CARDBOARD or MATT BOARDS may be used.</li> <li><b>Maximum</b> size of any print - 12 inches (30.5cm) on the longest side, plus mount.</li> <li><b>Minimum</b> size of any print - 5 inches (12.5cm) on the shortest side, plus mount.</li> <li><b>Maximum</b> mount size – Maximum of 2 inches (5cm) beyond all sides around print.</li> </ul>
Judging and scoring	<ul style="list-style-type: none"> <li>Judge's decision will be final.</li> <li><b>Most Successful Exhibitors</b> awarded via point score (2 points for 1st; 1 point for 2nd; 3 points for Champion)</li> <li>One winner will be selected for the <b>Best Theme</b> prize from all categories.</li> </ul>

Thank you to our wonderful sponsors!

**Todd Applebee Consulting and South Wandobah Pty Ltd**

P5 PLUS

6

6

3

0

6

P5 PLUS

6

0

6

P5 PLUS

6

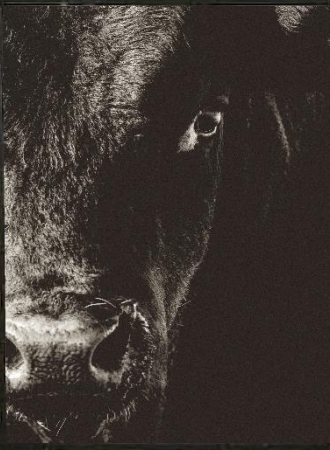
0

6

P5 PLUS

6

0



21  
20A  
20  
19A  
19  
18  
17A  
17

# Section F

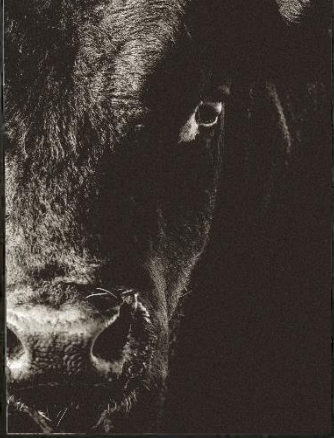
## *Photography*

Steward: Hannah McCauley, 0414 970 692

Each category has different themes that entrants can submit entries can for. Entries for each theme can be of any subject, so long as they fit within the theme.

The 2023 Quirindi Show theme is Farming, each category has one theme dedicated to Farming.

Categories	Theme
Primary School (12 and under)	Landscape
	Action
	Black & White
	Portraiture
	<b>Theme: Farming</b>
High School (13 – 17)	Landscape
	Abstract
	Black & White
	Portraiture
	<b>Theme: Farming</b>
Adults (18+)	Landscape
	Macro
	Black & White
	Portraiture
	<b>Theme: Farming</b>
Open	Food
	Night
	Texture
	Aerial
	<b>Theme: Farming</b>



Thank you to our wonderful sponsors!  
**Todd Applebee Consulting and South Wandobah Pty Ltd**

# Section F

## *Photography*

Steward: Hannah McCauley, 0414 970 692

### Prizes

Each category will have the following prizes. One winner will be selected for the Best Theme prize from all categories

Primary School	First Place	Ribbon, place card and \$15
	Second Place	Ribbon, place card and \$10
	Third Place	Ribbon, place card and \$5
	Champion	Ribbon, place card and \$30
	Most successful exhibitor	Ribbon, place card and \$15
High School	First Place	Ribbon, place card and \$15
	Second Place	Ribbon, place card and \$10
	Third Place	Ribbon, place card and \$5
	Champion	Ribbon, place card and \$30
	Most successful exhibitor	Ribbon, place card and \$15
Adults	First Place	Ribbon, place card and \$30
	Second Place	Ribbon, place card and \$20
	Third Place	Ribbon, place card and \$10
	Champion	Ribbon, place card and \$50
	Most successful exhibitor	Ribbon, place card and \$20
Open	First Place	Ribbon, place card and \$30
	Second Place	Ribbon, place card and \$20
	Third Place	Ribbon, place card and \$10
	Champion	Ribbon, place card and \$50
	Most successful exhibitor	Ribbon, place card and \$20
Best theme		Ribbon, place card and \$200

Thank you to our wonderful sponsors!

**Todd Applebee Consulting and South Wandobah Pty Ltd**

